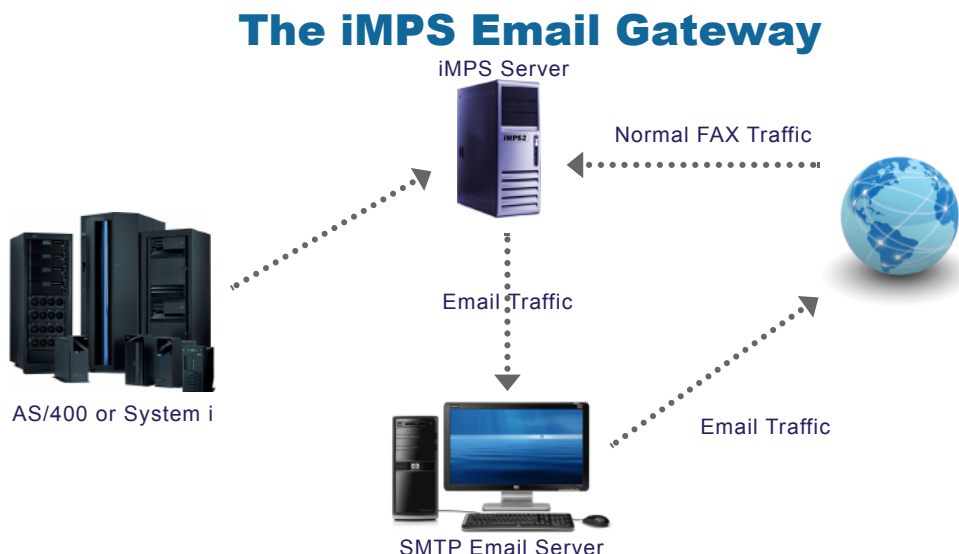


iMPS *Email Gateway*

“Send email directly from your AS/400 or System i”



Why Choose The iMPS Email Gateway?

The world's leading System i Fax solution now has full email integration. Automated application faxing can be expanded to accommodate those customers and vendors who would prefer to receive their purchase orders, invoices, etc. via email instead of fax.

The iMPS Email Gateway enables you to send and receive messages directly to and from your AS/400 or System i, including:

- Simple Inline Text Messages
- Tiff and PDF Attachments
- Reports via email
- Documents (POs, invoices, statements) via email

The benefits of the iMPS Email Gateway include:

- Never get a "busy" signal again
- Ensure premium quality copy no matter the type of document
- View and print on any Windows desktop
- Some 80% of customers/suppliers prefer email
- Some 80% of your faxes could be rerouted via email
- What would your savings be?

FAX/400 can retrieve email addresses using the same APIs (or exit programs) currently used for retrieving fax numbers. Instead of sending the document to the iMPS to transmit via facsimile, you can now decide to send specified documents as tiff/pdf attachments via email.

Brought to you by:

American Presence
Integration · Monitoring · Automation

To find out more ways on how you can improve your enterprise faxing please contact us at

North American Sales: (800) 429-8983

International Sales: +44 (0)20 8972 1390

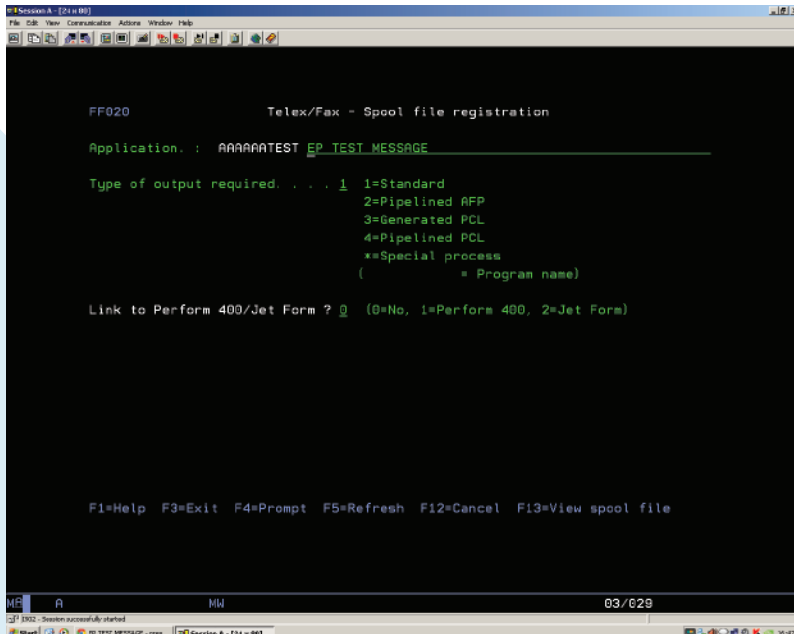
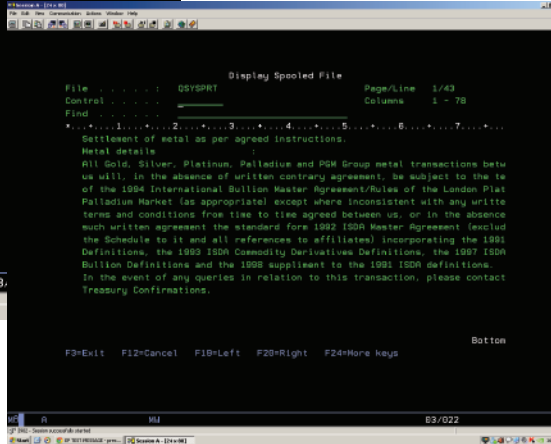
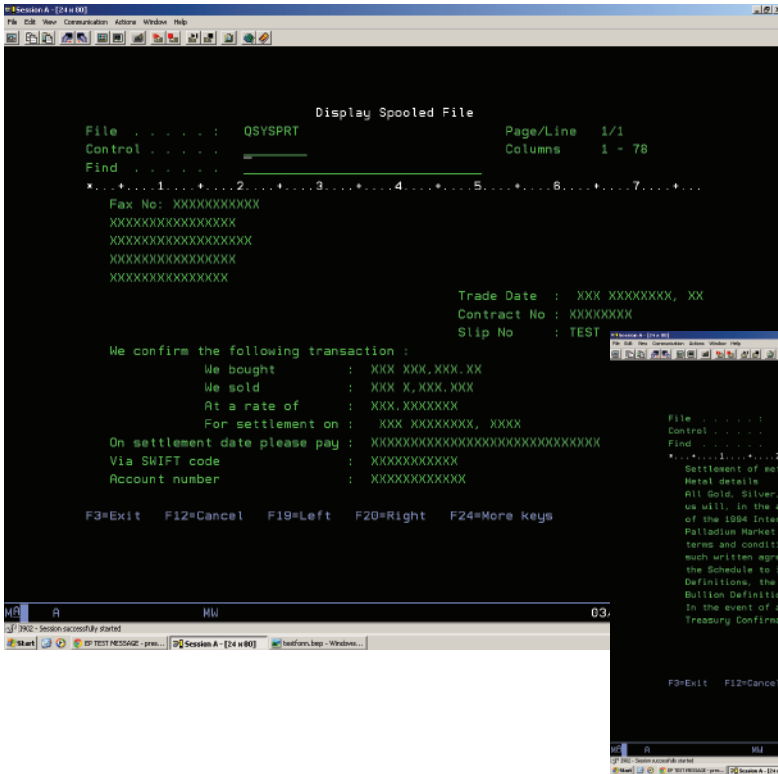
or visit our website at www.international-presence.com

iMPS Email Gateway

“Send email directly from your AS/400 or System i”

Raw Spool File

No application software change required. Just replace the fax number with the email address.



Screen Example 1

Manually sending an Email from TF400

This screen gives you an idea of how simple it is to send an email via the AS400.

Brought to you by:

American Presence
Integration · Monitoring · Automation

To find out more ways on how you can improve your enterprise faxing please contact us at

North American Sales: (800) 429-8983

International Sales: +44 (0)20 8972 1390

or visit our website at www.international-presence.com

iMPS Email Gateway

“Send email directly from your AS/400 or System i”

```
Session A - [24 x 08]
File Edit View Communication Actions Windows Help

C280 Telex/Fax - Queue review Date : 23/08/2012
Time : 16:43:38

Type option, press Enter.
1=Log 2=Change 3=Hold 4=Cancel 5=View
6=Release 7=Print 8=Status 9=Forward
V=Verification T=Trans>test dept K=Add test key

Opt Msg No Entered Description
= 0788460 7 23/08/2012 16.05 EP TEST MESSAGE
E 1 GONE BASIL E-MAIL ADDRESS (PDF ATTACHMENT)
_ 0788459 7 23/08/2012 15.58 EP TEST MESSAGE
E 1 GONE BASIL E-MAIL ADDRESS (PDF ATTACHMENT)
_ 0788458 7 23/08/2012 15.20 EP TEST MESSAGE
E 1 GONE BASIL E-MAIL ADDRESS (PDF ATTACHMENT)

F1=Help F2=Change view F3=Exit F5=Refresh F9=Statistics F10=View 2
F11=Change sequence F13=Printers F17=Top F18=Bottom F21=Display log

HR A MW 09/002
[3] [3] - Session successfully started
Start [ ] [ ] [ ] EP TEST MESSAGE - [ ] Session A - [24 x 08]
```

Screen Example 2

Queue Showing E = Emails and F = Faxes

TF400 recognizes the spool file as an email if the dial field contains an email address. If this is a fax number, then the spool file will be sent as a fax.

----- Forwarded message -----
From: **Admin** <admin@presencebpm.com>
Date: 23 August 2012 15:58
Subject: EP TEST MESSAGE
To: Marketing@presencebpm.com

Please see attachments:
788460.pdf



Screen Example 3

Received email as a pdf attachment

Brought to you by:

American Presence
Integration · Monitoring · Automation

To find out more ways on how you can improve your enterprise faxing please contact us at

North American Sales: (800) 429-8983

International Sales: +44 (0)20 8972 1390

or visit our website at www.international-presence.com